



# EDI Gateway

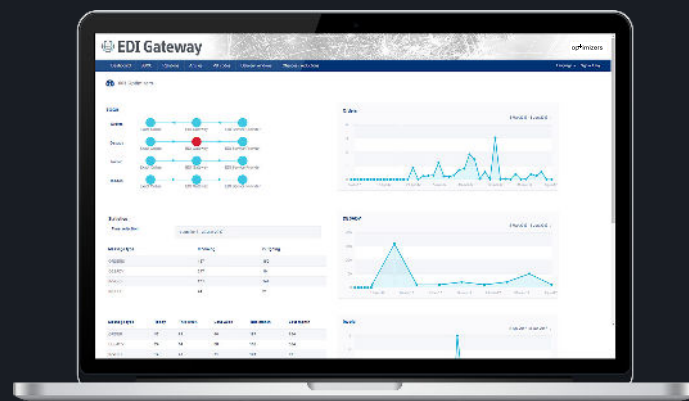
by optimizers

EDI for Exact Online

## EDI Gateway for Exact Online

### Easy to use

Are you searching for a way to communicate EDI messages with trading partners? The EDI Gateway for Exact Online is the solution. Optimizers offers a standard solution from the Cloud. As preferred EDI supplier of Exact Software, the EDI team developed a Cloud EDI environment for Exact Online customers. When using EDI Gateway Online your company will be digitally accessible for all of your customers.



### Simple and effective with Exact Online

By offering Online EDI, Optimizers offers an EDI solution that can be used by small-medium sized enterprises and that can be activated quickly. Therefore, you need to meet certain conditions, as entering the right article- and customer data in the Online EDI environment.

The EDI Gateway Online uses the necessary data of the Exact Online environment, in order to realize specific data in the Gateway. After the activation of your EDI mailbox, you will see all orders that were placed in Exact Online in the Gateway. Delivery notes and invoices can be send automatically as an EDI message to trading partners. With the monitor function of the EDI Gateway Online you can easily follow all exchanged messages.



### Realtime insight in message

See all of your received and sent messages. You are able to see the status of a message.



### Orders automatically in Exact Online

Receive orders of customers automatically. The messages generate an order within Exact Online.



### Connect your logistics services

With the Exact Online Gateway you can connect your logistic services to your Exact Online administration.



### SSCC labels with Exact Online

Generate EDI delivery notes with SSCC information with the SSCC builder.

### EDI Provider

To send EDI messages, you need an EDI provider in addition to the EDI Gateway. An EDI provider receives, translates and sends the EDI messages between you and your trading partner. The EDI Gateway always works in collaboration with an EDI provider.

### Exact EDI specialists

The EDI Gateway is installed at more than 150 companies. Optimizers has a team of specialists that only deals with the EDI Gateway and Exact Online. The EDI Gateway has users from the United States to Australia. Our EDI team is the point of contact for Exact Online users for all questions concerning the link with the various EDI systems that are applied worldwide.



# EDI Gateway

by optimizers

## 3PL connection

### Connect your logistics service provider

The EDI Gateway is able to connect your external logistics service provider in addition to standard EDI communication. By taking this process into account during automation, you will be able to automate the digital communication with your logistics service provider.

This means that your pick orders can be sent to your external logistics service provider without any additional actions and the response can be received and processed. Goods transactions can be validated between the production site and the logistics service provider.

Communication can take place in two ways: via the usual EDI channels and corresponding message types or via FTP communication. In both cases, a seamless connection is made to the process that has been set up in Exact Online.

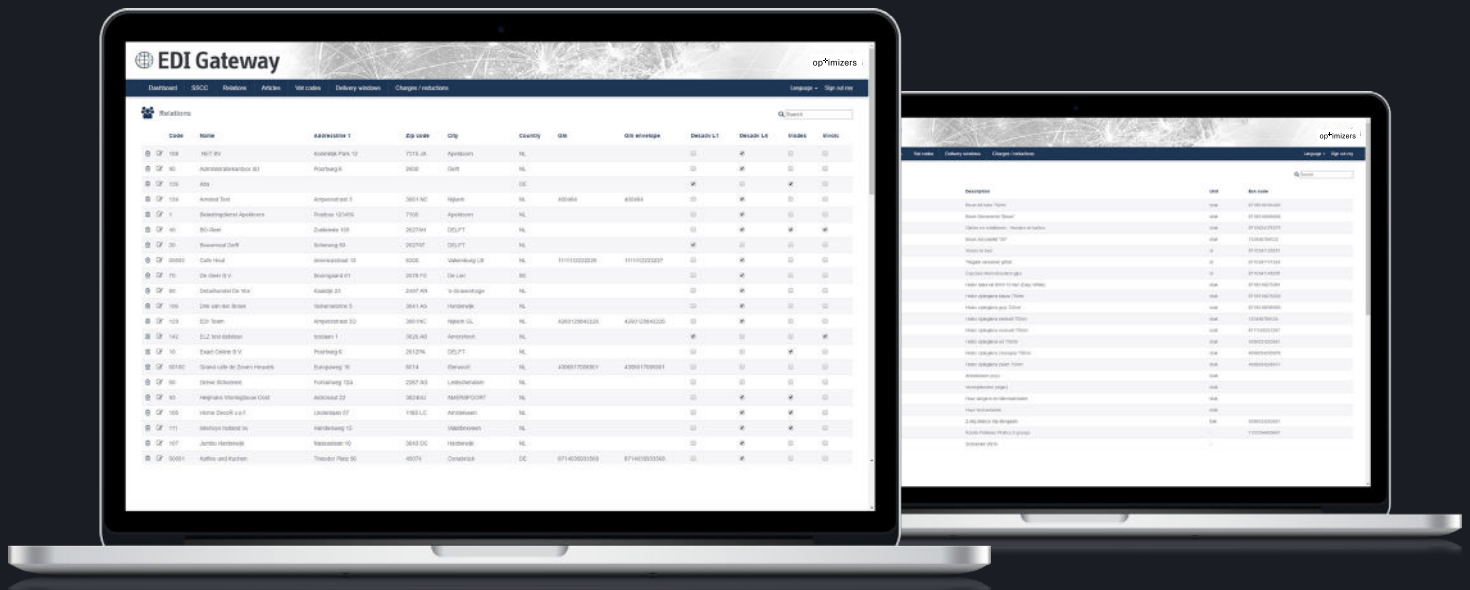
## Exact Business Software

### The EDI Gateway is Exact certified

Optimizers has developed a standard EDI module for the Exact Online customer that is flexible and quick to implement. The Exact EDI gateway works with the Software Development Kit (SDK) from Exact Software and has been certified by an extensive audit.



SDK certification by Exact Software indicates that the software module has been developed in accordance with the Exact Software standards and is using the Exact SDK correctly. As a result, transactions in the Online database are saved in a manner authorized by Exact.



## EDI Gateway supports, among other things, the following message types

### Outgoing

- INSDRS (Pick order)
- DESADV L1 (Packing slip without SSCC)
- DESADV L4 (Packing slip with SSCC)
- INVOIC (Invoice)
- APERAK (Confirmation of receipt)
- PRODAT (Product Data Message 3PL)
- ORDERS (Orders)

### Incoming

- ORDERS (Orders)
- DESADV L1 (Packing slip)
- DESADV L4 (Packing slip)
- RECADV (Receiving Advice 3PL)
- INVRPT (Inventory Report 3PL)